



# BAB™ Big Bubble Mixers

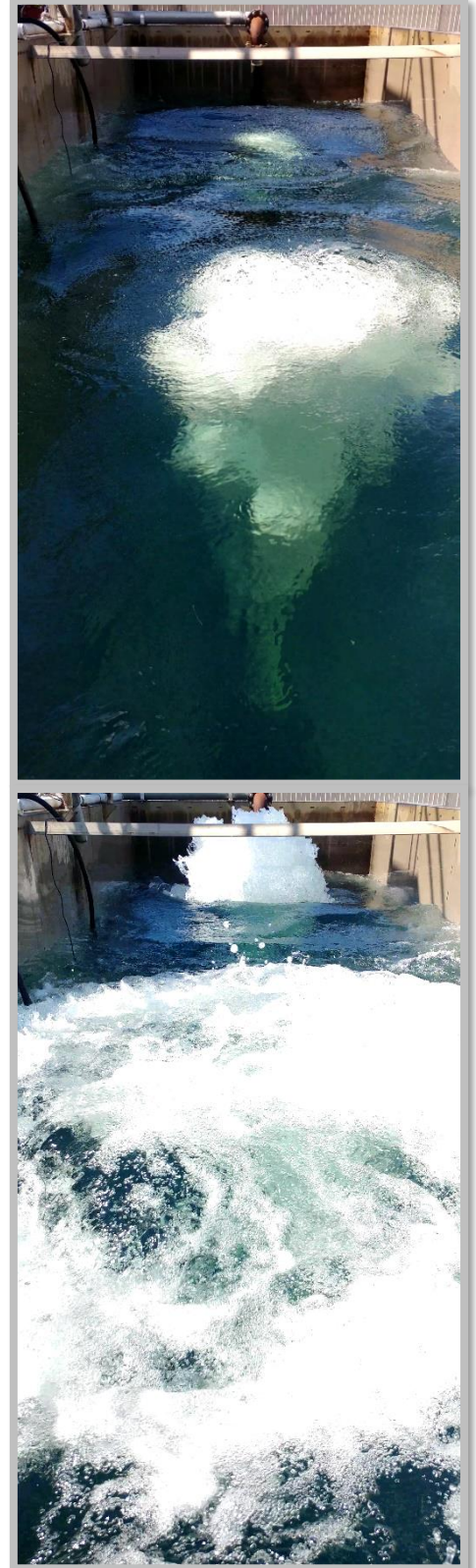
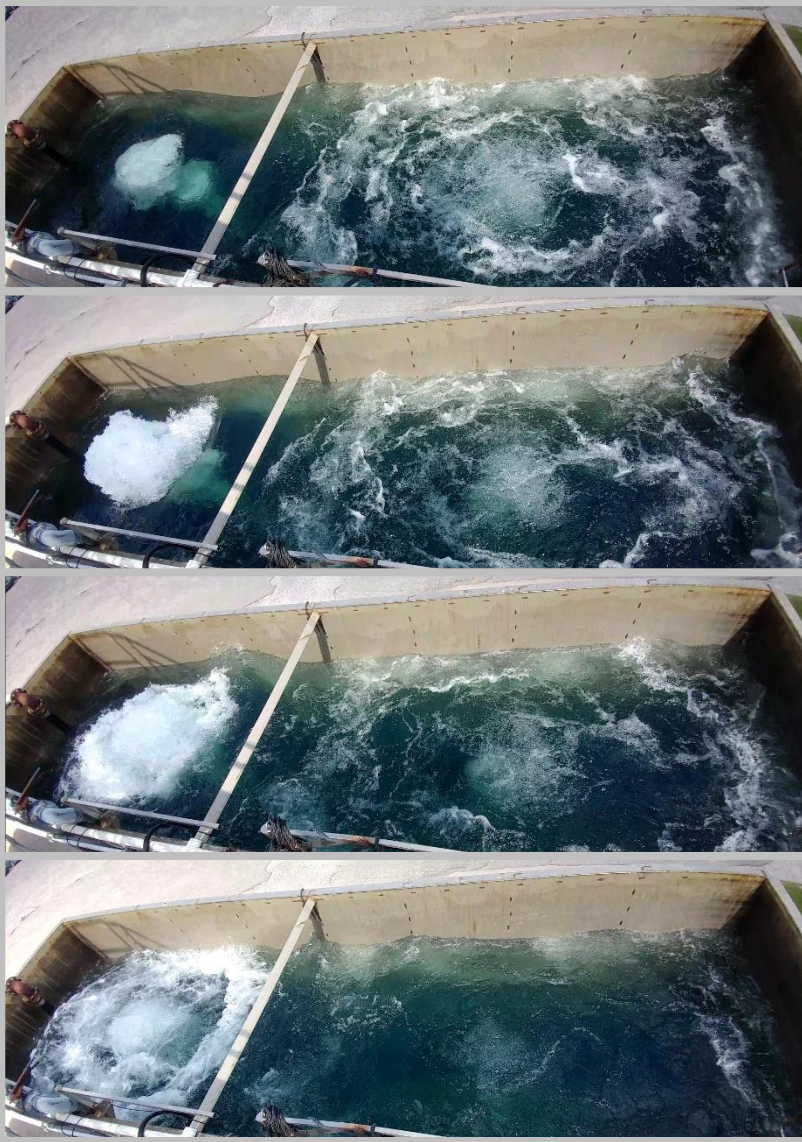
Advanced Geyser Technology



EDI Innovative Technology Series © 2018

Photo Release: September 04, 2018

# BAB™ Big Bubble Mixer Operation



## Technical Summary

**Tank Dimensions:** 8' x 25' x 16'

**Water Depth:** 14'

**Water Volume:** 2800 ft<sup>3</sup> = 20944 gal

**BAB™ Mixer – Model 6 | Qty 2 | Each Mixing 100 ft<sup>2</sup> Floor Area**

**Mixer Height:** 6.5'

**Bubble Release:** 7.5' below water level

**Bubble Volume:** 4 ft<sup>3</sup> = 30 gal

**Discharge Frequency:** 10 bubbles/minute, per mixer (6s intervals)

**Energy:** 28 scfm/1000ft<sup>3</sup>

*\*Pictures of two BAB™ Mixers operating in test tank. Units not synchronized.*