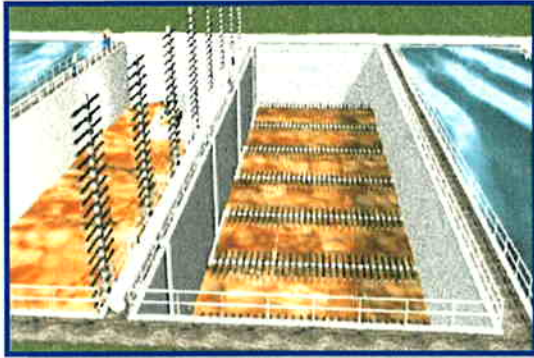


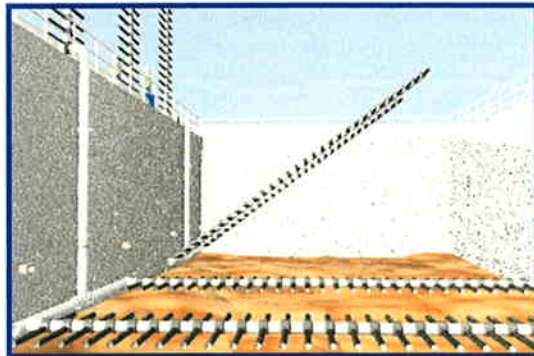


# ENVIRONMENTAL DYNAMICS INC.

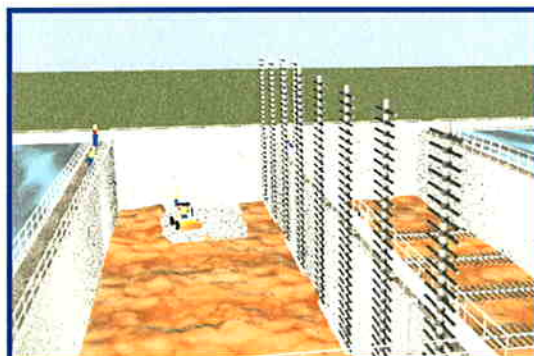
## Retractable Aeration System \*



Typical Grid Layout with Retractable Option



Simple Manual Header Retraction



Full Floor Access for Grit Removal or Reactor Maintenance

### Features/Benefits

#### **Complete Access to Reactor Floor**

- o Clear access for grit removal or reactor maintenance
- o Standard Design up to 40 ft Reactor Width (Optional Designs for applications over 40 feet)
- o No Components Installed on the Reactor Floor

#### **Aeration System Design Flexibility**

- o Traditional Full Floor Coverage Grid Configuration
- o High Density Diffuser Applications for Maximum OTE
- o Optional Roll Configurations for Mixing Available
- o Compatible with FlexAir™ Magnum, MiniPanel™, and MaxAir™ Diffuser Products

#### **Fully Retractable Headers**

- o Horizontal Position for Normal Aeration Performance
- o Vertical Position for Full Access to Reactor Floor
- o Simple Winch and Cable Retraction System

#### **Stainless Steel Construction Standard**

- o Long Service Life
- o Maximum Structural Integrity
- o Corrosion Resistant
- o 304L Standard (316L Available)

#### **For more information, contact EDI**

5601 Paris Rd, Columbia, MO 65202  
ph: 573-474-9456 fax: 573-474-6988  
edi@wastewater.com www.wastewater.com